

LAMPETER-STRASBURG SCHOOL DISTRICT
GROWTH PROJECTIONS REPORT
2011-2016

Presented to

LAMPETER-STRASBURG BOARD OF SCHOOL DIRECTORS

by

Kevin S. Peart, Ed.D.
Superintendent

November 1, 2011

TABLE OF CONTENTS

Table of Contents	1
District Census Growth 1989-2011	2
New Home Subdivisions	7
West Lampeter Township	7
Strasburg Borough	8
Strasburg Township	8
Summary of Projected New Homes	9
Building Capacities and Implications	10
Future Enrollment Projections (2012-2016)	12
Non-Public School Student Information	13
Miscellaneous Information and Interesting Statistics	16
Information Regarding English Language Learners	17
PSSA Results	18
SAT Results	19

DISTRICT CENSUS DATA 1989-2010

YEAR	MUNICIPALITY	POPULATION	INCREASE
1989	Strasburg Borough	2,567	
1989	Strasburg Township	3,399	
1989	West Lampeter Township	<u>9,545</u>	
	District Residents	15,511	
1990	Strasburg Borough	2,590	.9%
1990	Strasburg Township	3,645	7.2%
1990	West Lampeter Township	<u>10,299</u>	7.9%
	District Residents	16,534	6.5%
1991	Strasburg Borough	2,596	.2%
1991	Strasburg Township	3,721	2.1%
1991	West Lampeter Township	<u>10,470</u>	1.7%
	District Residents	16,787	1.5%
1992	Strasburg Borough	2,680	3.2%
1992	Strasburg Township	3,780	1.6%
1992	West Lampeter Township	<u>10,711</u>	2.3%
	District Residents	17,171	2.3%
1993	Strasburg Borough	2,690	.4%
1993	Strasburg Township	3,892	3.0%
1993	West Lampeter Township	<u>11,223</u>	4.9%
	District Residents	17,805	3.7%
1994	Strasburg Borough	2,724	1.3%
1994	Strasburg Township	3,941	1.3%
1994	West Lampeter Township	<u>11,683</u>	4.1%
	District Residents	18,348	3.1%
1995	Strasburg Borough	2,731	.2%
1995	Strasburg Township	3,959	.5%
1995	West Lampeter Township	<u>11,862</u>	1.5%
	District Residents	18,552	1.1%
1996	Strasburg Borough	2,759	1.0%
1996	Strasburg Township	3,987	.7%
1996	West Lampeter Township	<u>12,291</u>	3.6%
	District Residents	19,037	3.8%
1997	Strasburg Borough	2,793	1.2%
1997	Strasburg Township	3,984	-.08%
1997	West Lampeter Township	<u>12,684</u> (578 annex)	3.2%
	District Residents	19,461	2.2%

1998	Strasburg Borough	2,795	.07%
1998	Strasburg Township	4,023	.90%
1998	West Lampeter Township	<u>12,881</u> (603 annex) (1,805 WV)	1.6%
	District Residents	19,699	1.2%
1999	Strasburg Borough	2,810	.54%
1999	Strasburg Township	4,032	.22%
1999	West Lampeter Township	<u>13,299</u> (609 annex) (1,825 WV)	3.2%
	District Residents	20,141	2.2%
2000	Strasburg Borough	2,816	.002%
2000	Strasburg Township	4,045	.003%
2000	West Lampeter Township	<u>13,881</u> (621 annex) (2,054 WV)	4.4%
	District Residents	20,742	3.0%
2001	Strasburg Borough	2,820	.001%
2001	Strasburg Township	4,051	.001%
2001	West Lampeter Township	<u>14,127</u> (622 annex) (2,059 WV)	1.8%
	District Residents	20,998	1.2%
2002	Strasburg Borough	2,780	-1.4%
2002	Strasburg Township	4,098	1.2%
2002	West Lampeter Township	<u>14,308</u> (620 annex) (1,973 WV)	1.3%
	District Residents	21,186	0.9%
2003	Strasburg Borough	2,790	.35%
2003	Strasburg Township	4,148	1.2%
2003	West Lampeter Township	<u>14,670</u> (609 annex) (2,059 WV)	2.5%
	District Residents	21,608	1.95%
2004	Strasburg Borough	2,738	-1.8%
2004	Strasburg Township	4,171	0.55%
2004	West Lampeter Township	<u>15,209</u> (596 annex) (2,277 WV)	3.67%
	District Residents	22,118	2.36%
2005	Strasburg Borough	2,758	0.7%
2005	Strasburg Township	4,174	0.07%
2005	West Lampeter Township	<u>15,410</u> (598 annex) (2,312 WV)	1.32%
	District Residents	22,342	1.01%
2006	Strasburg Borough	2,765	0.25%
2006	Strasburg Township	4,131	-1.03%
2006	West Lampeter Township	<u>15,644</u> (598 annex) (2,353 WV)	1.52%
	District Residents	22,540	0.89%
2007	Strasburg Borough	2,804	1.4%
2007	Strasburg Township	4,104	-0.65%
2007	West Lampeter Township	<u>15,744</u> (598 annex) (2,485 WV)	0.64%

	District Residents	22,652	0.50%
2008	Strasburg Borough	2,774	-1.06%
2008	Strasburg Township	4,020	-2.05%
2008	West Lampeter Township	<u>15,959</u> (590 annex) (2,470 WV)	1.37%
	District Residents	22,753	0.45%
2009	Strasburg Borough	2,825	1.8%
2009	Strasburg Township	4,048	0.70%
2009	West Lampeter Township	<u>15,982</u> (586 annex) (2,412 WV)	0.10%
	District Residents	22,855	0.45%
2010	Strasburg Borough	2,847	0.78%
2010	Strasburg Township	4,077	0.72%
2010	West Lampeter Township	<u>16,134</u> (577 annex) (2,484 WV)	0.95%
	District Residents	23,058	0.89%
2011	Strasburg Borough	2,824	-0.80%
2011	Strasburg Township	4,109	0.78%
2011	West Lampeter Township	<u>16,073</u> (586 annex) (2,504 WV)*	-0.38%
	District Residents	23,006	-0.22%
Total Increase 1989-2011		7,495	48.32%

* **15.57% of all Residents of West Lampeter Township live at Willow Valley.**
10.88% of all District Residents live at Willow Valley.

YEAR	MUNICIPALITY	HOUSEHOLDS	INCREASE
1992	Strasburg Borough	1,045	
1992	Strasburg Township	1,221	
1992	West Lampeter Township	<u>4,504</u>	
	District Households	6,770	
1993	Strasburg Borough	1,079	3.3%
1993	Strasburg Township	1,247	2.1%
1993	West Lampeter Township	<u>4,603</u>	2.2%
	District Households	6,929	2.4%
1994	Strasburg Borough	1,104	2.3%
1994	Strasburg Township	1,264	1.4%
1994	West Lampeter Township	<u>4,908</u>	6.6%
	District Households	7,276	5.0%
1995	Strasburg Borough	1,107	.3%
1995	Strasburg Township	1,272	.6%
1995	West Lampeter Township	<u>5,084</u>	3.6%
	District Households	7,463	2.6%

1996	Strasburg Borough	1,112		.4%
1996	Strasburg Township	1,279		.5%
1996	West Lampeter Township	<u>5,257</u>		3.4%
	District Households	7,648		2.5%
1997	Strasburg Borough	1,117		.4%
1997	Strasburg Township	1,280		.07%
1997	West Lampeter Township	<u>5,385</u>	(214 annex) (1,233 WV)	2.4%
	District Households	7,782		1.7%
1998	Strasburg Borough	1,124		.6%
1998	Strasburg Township	1,283		.23%
1998	West Lampeter Township	<u>5,442</u>	(217 annex) (1,234 WV)	1.05%
	District Households	7,849		.86%
1999	Strasburg Borough	1,148		2.1%
1999	Strasburg Township	1,288		.38%
1999	West Lampeter Township	<u>5,621</u>	(219 annex) (1,247 WV)	3.28%
	District Households	8,057		2.65%
2000	Strasburg Borough	1,150		.002%
2000	Strasburg Township	1,295		.005%
2000	West Lampeter Township	<u>5,780</u>	(220 annex) (1,307 WV)	2.8%
	District Households	8,225		2.1%
2001	Strasburg Borough	1,150		0.0%
2001	Strasburg Township	1,305		.7%
2001	West Lampeter Township	<u>5,898</u>	(220 annex) (1,340 WV)	2.0%
	District Households	8,353		1.5%
2002	Strasburg Borough	1,150		0.0%
2002	Strasburg Township	1,313		.6%
2002	West Lampeter Township	<u>6,049</u>	(223 annex) (1,345 WV)	2.6%
	District Households	8,512		1.9%
2003	Strasburg Borough	1,149		-0.09%
2003	Strasburg Township	1,327		1.06%
2003	West Lampeter Township	<u>6,141</u>	(225 annex) (1,350 WV)	1.5%
	District Households	8,617		1.2%
2004	Strasburg Borough	1,161		1.0%
2004	Strasburg Township	1,335		.6%
2004	West Lampeter Township	<u>6,518</u>	(221 annex) (1,585 WV)	6.14%
	District Households	9,014		4.6%
2005	Strasburg Borough	1,160		-0.0
2005	Strasburg Township	1,335		0.00%
2005	West Lampeter Township	<u>6,581</u>		0.96%

	District Households	9,076		0.69%
2006	Strasburg Borough	1,162		0.17%
2006	Strasburg Township	1,335		0.00%
2006	West Lampeter Township	<u>6,706</u>	(221 annex) (1,585 WV)	1.90%
	District Households	9,203		1.40%
2007	Strasburg Borough	1,162		0.00%
2007	Strasburg Township	1,336		0.07%
2007	West Lampeter Township	<u>6,768</u>	(221 annex) (1,585 WV)	0.92%
	District Households	9,266		0.68%
2008	Strasburg Borough	1,153		-0.77%
2008	Strasburg Township	1,316		-1.50%
2008	West Lampeter Township	<u>6,762</u>	(222 annex) (1,585 WV)	-0.09%
	District Households	9,231		-0.38%
2009	Strasburg Borough	1,169		1.39%
2009	Strasburg Township	1,322		0.46%
2009	West Lampeter Township	<u>6,813</u>	(222 annex) (1,585 WV)	0.75%
	District Households	9,304		0.79%
2010	Strasburg Borough	1,178		0.77%
2010	Strasburg Township	1,330		0.61%
2010	West Lampeter Township	<u>6,845</u>	(222 annex) (1,570 WV)	0.47%
	District Households	9,353		0.53%
2011	Strasburg Borough	1,185		0.59%
2011	Strasburg Township	1,335		0.37%
2011	West Lampeter Township	<u>6,867</u>	(222 annex) (1,570 WV)*	0.32%
	District Households	9,387		0.88%
Total Increase 1992-2011		2,617		38.65%

* 16.72% of all District Households are at Willow Valley.

NEW HOME SUBDIVISIONS

West Lampeter Township

1. Bare Property (Formerly Ashtonshire)
Property is no longer under Keystone Custom Homes and is for sale
2. Bewildered Builders - Millport Road next to West Creek
2 units planned
3. Country Meadows - Between Conard Road and Rockvale Road
3 units remaining in Phase 3
4. Greenleaf Estates - Lampeter Road
22 units remaining in Phase 2; development is for sale
5. Grouse Point - Rockvale Road
88 units to be developed (55 and older)
6. Ketterline Builders – Lampeter Road and Wiker Road
8 units planned; 1 unit under construction
7. Kingsley Development - Cloyd Wenger Property
5 units remaining to be developed
8. Mill Creek - At the joining of Conard Road and Windy Hill Road
46 units remaining in Phases 2-4 (Phase 4 yet to be approved)
9. Stone Meadows - East side of Lampeter Road and Village Road intersection
14 units planned – currently nothing is happening here
10. Summer Breeze – Formerly Horst property
80 units remaining to be built (townhouses) – presently about 50% complete
11. Thunder Lane
1 home remaining to be built
12. West Creek
261 total residences – combination apartments (24), townhouse, single family dwellings (several small shops likely as well)
13. Willow Bend – Formerly Hunter's Glen Breneman Road
Approximately 32 units remaining to be built (About 60% Complete)

14. Willow Ridge Manor - East side of road, near Broadmoor
29 potential dwellings, likely apartments; permits issued, but no construction yet
15. Willow Valley - Herr Property
220 units planned, but appear to be presently on the back burner
Under consideration is a 118 unit addition to Manor North
16. Witmer/Hess Property – Behind Municipal Building
135 units planned

In addition, there will be approximately 5 non-development lots where houses will be built and occupied this year.

The number of proposed residences at this time in West Lampeter Township is 1,069.

Strasburg Borough

16. Trails - Subdivision off Miller Street
Four homes remain to be built.
17. Feister Farm - Between North Jackson Street and North Decatur Street
Owned by Glenn Eshleman. No plans currently exist to develop this property.
18. Strasburg Commons - Formerly Historic Strasburg
An adult community (55+) of 126 units. Being developed by Charter Homes. First phase, 42 units, is under construction. Of the 42, 22 have been completed.
Preliminary plan approved for second phase of approximately 60 homes.
19. Trails 2 - An extension of Sunset Avenue
Six homes have now received final approval.

Potential number of homes at this time in Strasburg Borough is 174.

Strasburg Township

20. The municipality normally averages six to seven new homes per year, but only three were built in the last year.
21. The Bunker Hill/Metzler property has a small development of seven homes planned. Four have been completed, and three remain to be built.

Potential number of homes for the next year in Strasburg Township is 7-10.

SUMMARY OF PROJECTED NEW HOMES

Several extrapolations can be drawn from the data on the previous pages. These projections are conjecture based upon these plans and past experience.

1. There are approximately **1,069** units planned for West Lampeter Township in the next several years.
2. There are approximately **174** units planned for Strasburg Borough
3. There is only one development being planned in Strasburg Township for 2011, and the municipality has averaged less than **10** new homes each year for the last 10 years.

Summary

A total of **1,253** homes are potential for the next few years depending upon many factors including the economy and the sewer moratorium. The breakdown by municipality for these potential homes is as follows:

Strasburg Borough	174
Strasburg Township	10
West Lampeter Township	1,069 *

* includes 5 non-development homes annually

Presently, we average **.33** children per household that attend public school. If the home school, tutored, and cyber school students (182) and private/parochial students (581) are included in the calculation, the average household contains **.413** school-age children. If Willow Valley's households (1,570) were excluded, each household averages **.496** school-age children. If this ratio continues and if all units are built, this would be an increase of approximately 414 school-age children residing in the district.

Our students come from approximately 1,790 different addresses (households). This means that approximately 19.1% of our households have students in school. If Willow Valley is subtracted, the percent of our households that have students in school is approximately 22.9%.

BUILDING CAPACITIES AND IMPLICATIONS

<u>BUILDING</u>	<u>STUDENT CAPACITY</u>
Hans Herr Elementary School	776 *
Lampeter Elementary School	525 *
Strasburg Elementary School	268 *
Martin Meylin Middle School	822
Lampeter-Strasburg High School	<u>1,218</u>
Total Building Capacity	3,609 *

* Elementary capacities are based upon 20 students per kindergarten and first grade, 23 students per second and third grade, and 25 students per fourth and fifth grade.

Present Building Enrollment 2011

<u>BUILDING</u>	<u>STUDENT ENROLLMENT</u>
Hans Herr Elementary School	691
Lampeter Elementary School	457
Strasburg Elementary School	146
Martin Meylin Middle School	745
Lampeter-Strasburg High School	<u>1,074</u>
Total Enrollment	3,113

<u>Projected Enrollment</u>	<u>2012</u>	<u>2013</u>	<u>2014</u>	<u>2015</u>	<u>2016</u>
Elementary	1,244	1,242	1,211	1,188	1,099
Middle School	748	759	723	677	672
High School	<u>1,045</u>	<u>1,010</u>	<u>997</u>	<u>1,011</u>	<u>996</u>
Total Enrollment	3,037	3,011	2,931	2,876	2,767
Difference between District capacity (3,609) and enrollment	572	598	678	733	842
Difference between elementary capacity (1,569) and enrollment	325	327	358	381	470
Difference between middle school capacity (822) and enrollment	74	63	99	145	150
Difference between high school capacity (1,218) and enrollment	173	208	221	207	222

Numbers of students at the high school do not accurately reflect the number of students who may be receiving their education in the high school building because some attend the Lancaster County Career and Technology Center or the Lancaster County Academy. Presently, 26 students are enrolled for the full-day program and 17 for the half-day program at the CTC (including 6 students who are participating in the CTC Health Cluster program). Five students are enrolled presently enrolled at the Lancaster County Academy.

Growth Time Line

The opening of Lampeter Elementary School in 2008 has relieved the overcrowded situation in the elementary schools. With the opening of that facility, the following statements are true:

1. All buildings are presently considerably under capacity.
2. With projections based upon live births, it appears that all buildings will remain under capacity for the foreseeable future.
3. All buildings have been updated and are in excellent condition.

It is, however, important to remember that enrollment numbers are based on projections. The further into the future that the one extends, the less reliable the projections become.

FUTURE ENROLLMENT PROJECTIONS

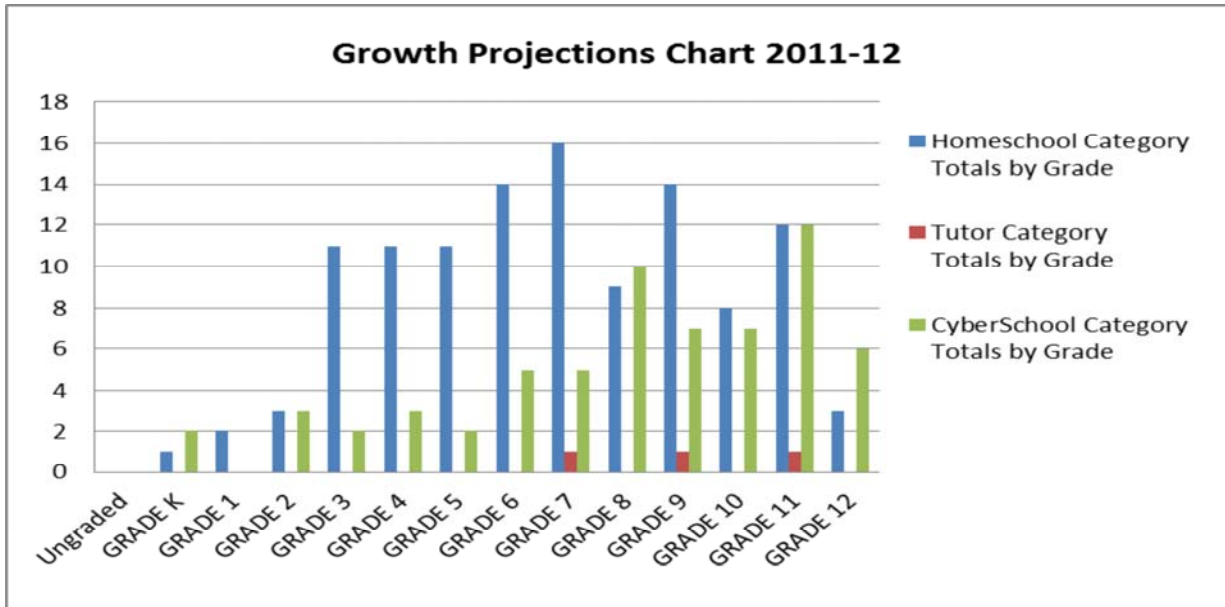
		2012-2013	2013-2014	2014-2015	2015-2016	2016-2017
Elementary	Kdg.	179	211	175	162	121
	Grade 1	201	186	219	182	168
	Grade 2	216	201	186	219	182
	Grade 3	196	220	205	190	223
	Grade 4	221	199	223	208	193
	Grade 5	231	225	203	227	212
	Total	1,244	1,242	1,211	1,188	1,099
Middle School	Grade 6	252	236	229	207	231
	Grade 7	266	253	237	230	208
	Grade 8	230	270	257	240	233
	Total	748	759	723	677	672
High School	Grade 9	271	246	289	275	257
	Grade 10	246	256	232	273	260
	Grade 11	276	234	244	221	260
	Grade 12	252	274	232	242	219
	Total	1,045	1,010	997	1,011	996
Grand Total	3,037	3,011	2,931	2,876	2,767	

NON-PUBLIC SCHOOL STUDENT INFORMATION

Homeschool / Tutored / Cyber School Students - 2011-2012

Total Number of Families 102
 Total Number of Homeschool & Tutored Students 118
 Total number of Cyber School Students 64

Grade Level	Home School Category - Totals by Grade	Tutored Category - Totals by Grade	Cyber School Category - Totals by Grade	Totals by Grade Level
Ungraded	0	0	0	0
GRADE K	1	0	2	3
GRADE 1	2	0	0	2
GRADE 2	3	0	3	6
GRADE 3	11	0	2	13
GRADE 4	11	0	3	14
GRADE 5	11	0	2	13
GRADE 6	14	0	5	19
GRADE 7	16	1	5	22
GRADE 8	9	0	10	19
GRADE 9	14	1	7	22
GRADE 10	8	0	7	15
GRADE 11	12	1	12	25
GRADE 12	3	0	6	9
Totals by Category	115	3	64	182



Private / Parochial Students 2011-2012Total Number of Families

270

Total Number of Students

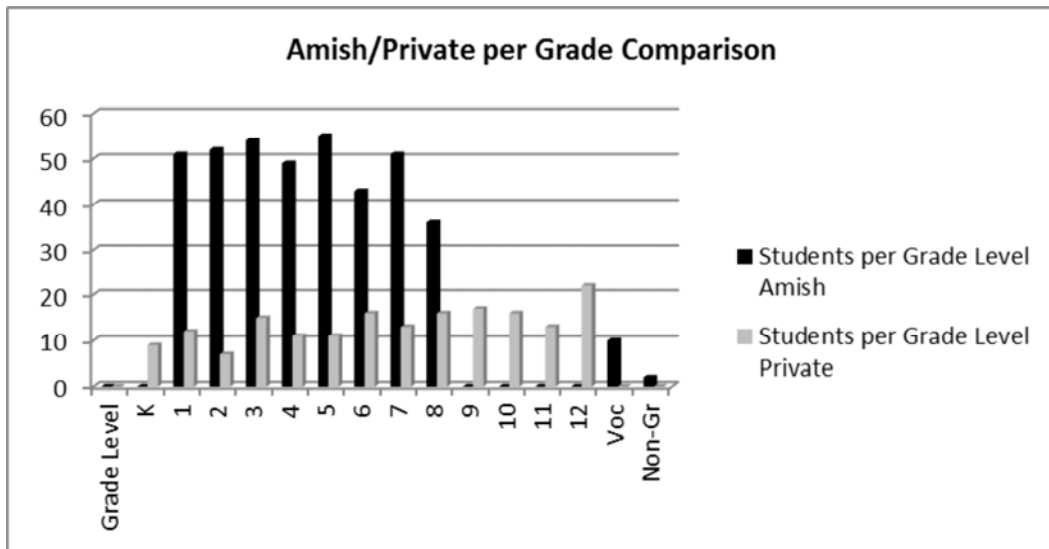
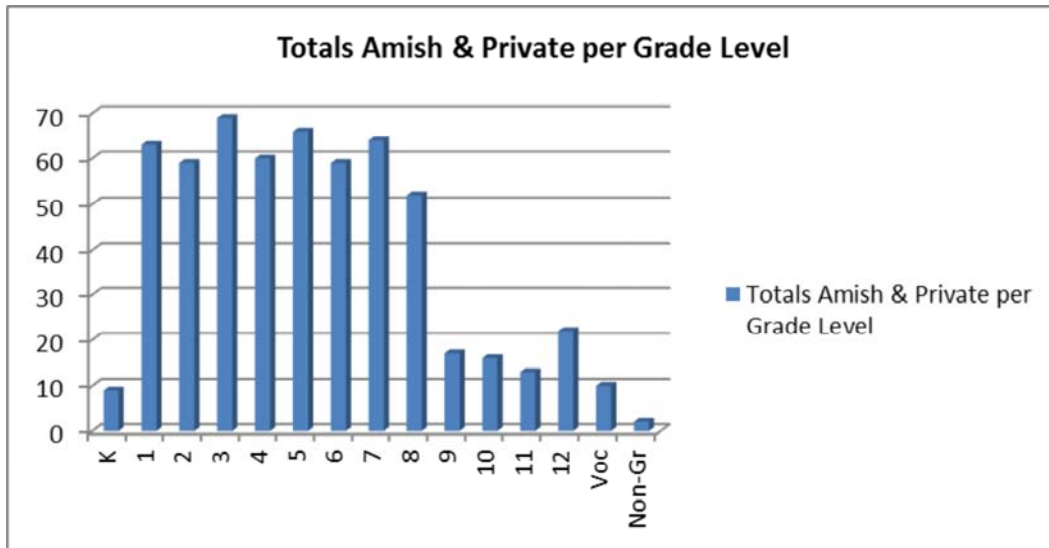
581

SCHOOL	Students per School
AMISH - BEAVER VALLEY	26
* AMISH - BELMONT SPECIAL - no info.	0
AMISH - BUNKER HILL	26
AMISH - EDISONVILLE	26
AMISH - EDISONVILLE (V)	2
AMISH - FAIRVIEW - no info.	0
AMISH - FAIRVIEW SPECIAL - no info.	0
AMISH - FOGGY RIDGE	7
AMISH - FOGGY RIDGE SPECIAL	2
AMISH - GREENLAND	16
AMISH - IVA	4
AMISH - KRANTZ MILL	28
AMISH - LOCUST RIDGE	30
AMISH - N JACKSON	32
AMISH - NORTH STAR	26
AMISH - NORTH STAR VOC	0
AMISH - REFTON	5
AMISH - ROCKVALE	36
AMISH - ROCKY RIDGE	16
AMISH - SIDES MILL	31
AMISH - SOUTH STRASBURG	27
AMISH - STRASBURG VOC	0
AMISH - SYCAMORE	35
AMISH - SYCAMORE SPEC	0
AMISH - WEST LAMPETER VOC	0
AMISH - WHITE OAK	28
DAYSRING CHRISTIAN	14

SCHOOL	Students per School
FAIRHAVEN CHRISTIAN	0
FAITH MENNONITE HS	3
* JANUS SCHOOL - no info.	0
LANCASTER CATHOLIC HS	17
LCCS - W LAMPETER CAMPUS	26
LCCS - LEOLA CAMPUS	19
LANCASTER COUNTRY DAY	11
LMS - LANCASTER CAMPUS	25
LMS - LOCUST GROVE CAMPUS	19
LMS - NEW DANVILLE CAMPUS	2
LANCASTER PREP	0
LINDEN HALL	1
LINVILLE HILL MENNONITE	11
LITITZ CHRISTIAN	4
MONTESSORI ACADEMY - no info.	0
NEW SCHOOL	7
RESURR - ST MARY - closed	0
RESURR - ST ANTHONY	1
SACRED HEART	5
SAINT ANNE	9
SAINT LEO	4
* CENTRAL PENN CHRISTIAN (SDA)	0
* VERITAS	0
* WEAVERTOWN	0
Totals	581

* = Info provided by census

Grade Level	Students per Grade Level - Amish	Students per Grade Level - Private	Totals Amish & Private per Grade Level
K	0	9	9
1	51	12	63
2	52	7	59
3	54	15	69
4	49	11	60
5	55	11	66
6	43	16	59
7	51	13	64
8	36	16	52
9	0	17	17
10	0	16	16
11	0	13	13
12	0	22	22
Voc	10	0	10
Non-Gr	2	0	2
Total	403	0	581



MISCELLANEOUS INFORMATION AND INTERESTING STATISTICS

Minority Population:

American Indian/Alaskan Native	3	.10%	(Not Hispanic)
Native Hawaiian/Pacific Islander	1	.03%	(Not Hispanic)
Black/African American	22	.71%	(Not Hispanic)
Hispanic	129	4.14%	(Any Race)
Asian	63	2.02%	(Not Hispanic)
Multi-Racial	74	2.38%	(Not Hispanic)
Total	292	9.38%	

50.69 percent of all public school students are male.

49.31 percent of all public school students are female.

4.69 percent of all public school students are in Strasburg Elementary School.

95.31 percent of all public school students are on the District campus in Lampeter.

80.31 percent of all school-age children in the District attend public school.

2.97 percent of all school-age children in the District are home school students.

14.99 percent of all school-age children in the District attend private or parochial schools.

1.65 percent of all school-age children in the District attend cyber charter school.

.08 percent of all school-age children in the District are tutored.

19.56 percent of all school-age children in the District are identified as low-income students (free and reduced lunch program).

1.10 percent is the District dropout rate as determined by the Pennsylvania Department of Education.

INFORMATION REGARDING ENGLISH LANGUAGE LEARNERS

A total of 34 students have been identified as English Language Learners as of October 1, 2011. The 34 students are from 12 different countries of origin. The breakdown of students from each country by grade is as follows:

	K	1	2	3	4	5	6	7	8	9	10	11	12	Total
Puerto Rico				1	2	0		1	1	1	1	1		8
Guatemala	2												1	3
Thailand	1									1				2
Belgium						1				1				2
India	1					1		1						3
China		1		1						1				3
Philippines				1	1			1						3
Mexico		1	1	1					0					3
Honduras									1			1		2
Vietnam	1		1		1									3
Bulgaria													1	1
Ecuador											1			1

A breakdown of languages spoken by the 34 students by grade is as follows:

	K	1	2	3	4	5	6	7	8	9	10	11	12	Total
Spanish	2	1	1	2	1			1	2	1	2	2	1	16
Chinese		2		1						1				4
Gujarati	1													1
French						1				1				2
Hindi						1		1						2
Vietnamese			1		1									2
Tagalog				1	1			1						3
Thai	1									1				2
English					1									1
Bulgarian													1	1

PSSA RESULTS
Summary of Proficient and Advanced Students by Year

READING

% Students Proficient and Advanced

Grade							State Avg.
<u>Level</u>	<u>2006</u>	<u>2007</u>	<u>2008</u>	<u>2009</u>	<u>2010</u>	<u>2011</u>	<u>2011</u>
3	86	86	95	93	89	90	77
4		78	80	91	88	89	73
5	81	73	73	79	79	83	67
6		77	81	82	79	88	70
7		81	89	89	88	87	76
8	90	89	95	91	94	96	82
11	77	76	78	78	78	83	69

MATH

% Students Proficient and Advanced

Grade							State Avg.
<u>Level</u>	<u>2006</u>	<u>2007</u>	<u>2008</u>	<u>2009</u>	<u>2010</u>	<u>2011</u>	<u>2011</u>
3	95	93	95	95	94	92	84
4	90	89	92	93	96	94	85
5	73	82	85	79	89	83	76
6	78	85	87	86	85	92	79
7	78	79	86	92	88	87	79
8	85	84	90	89	92	96	77
11	69	74	76	72	79	83	60

WRITING

% Students Proficient and Advanced

Grade							State Avg.
<u>Level</u>		<u>2007</u>	<u>2008</u>	<u>2009</u>	<u>2010</u>	<u>2011</u>	<u>2011</u>
5		73	70	75	76	83	67
8		93	93	88	92	86	73
11		89	94	89	83	94	85

SCIENCE

% Students Proficient and Advanced

Grade							State Avg.
<u>Level</u>		<u>2008</u>	<u>2009</u>	<u>2010</u>	<u>2011</u>	<u>2011</u>	<u>2011</u>
4		88	91	88	92	83	
8		73	75	78	78	58	
11		50	52	52	56	41	

SAT RESULTS
Summary of Students Tested by Year

YEAR	# of Tests Given	PENNSYLVANIA			NATIONAL			LAMPETER-STRASBURG			TOTAL DIFF	
		VERB	MATH	WRITING	VERB	MATH	WRITING	VERB	MATH	WRITING	NATL	STATE
95-96	91	498	492		505	508		509	521		17	40
96-97	105	498	495		505	511		516	523		23	46
97-98	118	497	495		505	512		500	527		10	35
98-99	128	498	497		505	511		516	527		27	48
99-00	134	498	497		505	514		519	546		46	70
00-01	151	500	499		506	514		520	538		38	59
01-02	127	498	500		504	516		504	527		11	33
02-03	161	500	502		507	519		520	534		28	52
03-04	169	501	502		508	518		528	554		56	79
04-05	151	501	503		508	520		519	540		31	55
05-06	139	493	500	483	503	518	497	522	527	501	+32	+74
06-07	164	493	499	482	502	515	494	509	533	482	+13	+50
07-08	156	494	501	483	502	515	494	520	543	500	+52	+85
08-09	172	493	501	483	501	515	493	501	526	492	+10	+42
09-10	180	492	501	480	501	516	492	520	538	506	+55	+91
10-11	189	493	501	479	497	514	489	521	543	498	+62	+89